

Chapter 3.2

Hawk Mountain Region

3.2 Hawk Mountain Region

The Hawk Mountain Region has a diverse composition. Like the Tulpehocken Region, its northern bounds are made up of an ecologic corridor called the Kittatinny Ridge. From north to south through the center of the region runs the Schuylkill, a designated Pennsylvania Scenic River (Act 283). There is an extensive German heritage that can still be observed within the region's citizens and architecture. Recreational resources vary in size and ownership but overall are sufficiently provided for within the region.

Recreation

Recreation is provided by municipal and regional parks and includes amenities like hiking, biking, fishing, boating, tot-lots and picnicking. Additional facilities are provided by the school districts within the area that in many instances allow citizens to use their facilities at no cost. According to our analysis, the Hawk Mountain Region's municipalities adequately provide recreational opportunities for their citizens. However, population stressors spilling over from Lehigh County could potentially create future need.

Since the last Berks County Recreation Plan completed in 1993, which identified the Schuylkill River Corridor as a High Priority, much has been accomplished in creating Schuylkill River Trail connections. Building on the nearly complete trail that extends from Philadelphia to Reading, the Schuylkill River Greenway Association (SRGA) is now setting its sites on connecting Reading to Hamburg and Pottsville. The Bartram section of the Schuylkill River Trail has portions planned or under construction. The SRGA's priority is to establish connectivity by using a combination of on or off road trail linkages. Once connectivity is achieved, the priority will shift to converting on-road portions of the trail to off road.

With the nationally recognized Appalachian and Schuylkill River Heritage Area trails passing through the region, there is much potential for providing connections from these trails to populated areas (walking and trails were items that ranked highly within our survey results, see Chapter 5 Section 7). Boroughs like Hamburg and Shoemakersville are situated perfectly to capitalize on the prospective tourism that the Schuylkill River Trail could bring to the region. Similarly, Strausstown's proximity to the Appalachian Trail could prospectively contribute to the borough's economy if a hiking linkage were created.



Berks Bicycle Club

Existing and Recommended Recreation Acreages

Municipality	Current Acre- Est. Pop.- Rec. Min. Acre	Projected 2010 Pop.- Rec. Min. Acre	Projected 2020 Pop.- Rec. Min. Acre
Albany Township	49.03- 1697- 10.61	1806- 11.29	1934- 12.09
Centerport Borough	3.07- 330- 2.06	367- 2.29	409- 2.56
Centre Township	0- 3916- 24.48	4307- 26.92	4869- 30.43
Fleetwood Borough	37.51- 3996- 24.98	4281- 26.76	4703- 29.39
Greenwich Township	0- 3499- 21.87	3873- 24.21	4315- 26.97
Hamburg Borough	26.83- 4153- 25.96	4155- 25.97	4245- 26.53
Kutztown Borough	48.61- 5144- 32.15	5602- 35.01	6039- 37.74
Lenhartsville Borough	0- 171- 1.07	161- 1.01	143- 0.89
Lyons Borough	3.03- 508- 3.18	460- 2.87	445- 2.78
Maidencreek Township	76.38- 7914- 49.46	8488- 53.05	11121- 69.51
Maxatawny Township	26.41- 7049- 44.06	6353- 39.71	6659- 41.62
Perry Township	19.88- 2536- 15.85	2572- 16.07	2597- 16.23
Richmond Township	0- 3574- 22.34	3660- 22.87	3764- 23.25
Shoemakers-	13.9-	2446-	2973-

ville Borough	2117- 13.23	15.29	18.58
Strausstown Borough	0- 337- 2.11	319- 1.99	303- 1.89
Tilden Township	7.15- 3684- 23.03	4166- 26.04	4961- 31.01
Upper Bern Township	8.2- 1580- 9.88	1659- 10.37	1748- 10.92
Upper Tulpehocken Township	5.68- 1602- 10.01	1660- 10.37	1849- 11.56
Windsor Township	3.17- 2424- 15.15	2461- 15.38	2656- 16.6
TOTALS	328.85- 56,231- 351.44	58796- 367.47	65733- 410.55

Abbreviations: Rec.= Recommended; Pop.= Population; Est.= Estimated; Min.-Minimum
Sources:U.S. Census Bureau, 2004 Estimates
PaDEP 2006 State Water Plan Population Projections, 2010 and 2020
Population Projections
National Recreation & Park Association, NRPA suggests that a park system, at a minimum, be composed of a core system of parklands, with a total of 6.25 to 10.5 acres of developed close-to-home space per 1,000 population.
Note: Municipalities in **bold** have sufficient acreage.

Lake Ontelaunee is a regional recreation activity contributor providing walking/biking trails, picnicking and fishing. Another regional resource is the Berks County Parks Department's Kaercher Creek Park, which provides amenities ranging from fishing/boating and tot-lots to picnicking. Municipal cooperatives should be considered for maintaining existing parks as well as potentially creating recreational opportunities in the future.

Ecology

Along the Hawk Mountain Region's northern border is the Kittatinny Ridge, designated a "Mega Greenway" by the state. The region's ridge is a well known location for observing the

3.2 Hawk Mountain Region

migration of various bird species but is best known for hawk watching. Additionally, the ridge provides a strong ecological hub as well as a large un-fragmented area for specie movement. Additional ecologic resources include but are not limited to the Maiden Creek Greenways and the Schuylkill River corridor.

Within the mid portion of the region is the Lower Sacony hub. The hub's strategic centralized location and long-term viability is an essential factor in the county greenway system. It strengthens the connections between the Hawk Mountain hub south to the Little Manatawny and Oley Hills hubs.



Hawk Mountain

Similar to the Lower Sacony hub in stature and importance is the Lake Ontelaunee hub. Lake Ontelaunee, with a surface area of 1,100 acres and capacity of 3,264 million gallons of water, is rich with aquatic life but also plays an important role in bridging the ecologic gap between the Hawk Mountain hub to the north with the Schuylkill Palisades hub to the south.

Serving a purpose that is comparable to the Hawk Mountain hub is the Northkill Headwaters hub. The Northkill serves as a vital East-West hub within the Kittatinny Ridge Greenway. Nearly as important, the hub is the ingress/egress for specie movements originating from the south utilizing the Northkill Greenway. The

long-term health of the Northkill Headwaters hub will undoubtedly affect the strength of the Northkill Greenway connection as well as the County's overall ecologic greenway system.

Heritage

A deep German heritage is apparent in the Hawk Mountain region with a distinct dialect and architecture. The Kutztown Heritage Festival celebrates the German customs/traditions and has become a major source of tourist dollars for the region as well as the County. While some features are permanently preserved, others are being lost. The loss of barns and their hex signs, iconic of German heritage, is prompting the preservation efforts.

Many towns dot the region's countryside and all provide their own unique contribution to the County's history. Kutztown



Caboose from Reading Railroad

borough properties, along with stately buildings found within Kutztown University's Campus, are rich with historic architecture and every effort should be made to protect these features. Hamburg is another community that has not been overly

fragmented historically or architecturally. These boroughs, with their preserved architecture, are already experiencing revitalization. Several other boroughs within the region that have similar historic and architectural characteristics, like Fleetwood, Lenhartsville, Lyons, Strausstown and the village of Virginville have the same potential for continued revitalization.

Listed below are the sites and districts listed on the National Register of Historic Places. Additionally, the Hawk Mountain Region has 7 sites and 9 districts that have been technically deemed eligible for the National Register of Historic Places. Also, there are another 309 historic sites on record at the Pennsylvania Museum and Historic Commission. Finally, 159 more sites have been identified by historic preservation groups as having some local significance. Identified National Historic Register sites include:

- | | |
|------------------------------|-------------------------|
| - Bellmans Union Church | - Kutztown School Bldg. |
| - Brobst Grist Mill | - Lenhart Farm |
| - Daniel Berk Log House | - Merit Underware Co. |
| - Dauberville Bridge | - Merkel Grist Mill |
| - Dreibelbis Mill | - Merkel Mill Complex |
| - H.K. Deisher Knitting Mill | - Moselem Farms Mill |
| - Hamburg Armory | - Schaumboch's Tavern |
| - Hottenstein Mansion | - Seyfert Mill |
| - Kauffman's Mill | - Stein Mill |
| - Kutz Mill | - Trexler Bridge |
| - Kutz Mill Bridge | |

Identified National Historic Register districts include:

- | | |
|-----------------------|-----------------------------|
| - Boyer-Mertz Farm | - Christian Schlegel Farm |
| - Joel Drebelbis Farm | - Dale Siegfried Farm |
| - Guldin Mill | - Trexler Historic District |
| - Jacob Leiby Farm | - Virginville Historic |

While there are many sites either listed on or identified as being potentially listed on the National Historic Register, it is important that remaining resource clusters be identified and preserved as this will help the eligibility of those sites in the future. This plan

identifies themes for the Hawk Mountain Region. These themes should be considered when conducting historic resource surveys or assembling a historic preservation plan. As additional data is collected more themes may emerge or the themes identified below may be more focused (ex: farm type, barns, mill type, etc).

- Farms: Pennsylvania Bank Barns
- Mills: Grist Mills
- Family name derived buildings and districts
- Bridges: stone and iron

Greenway Section

The Greenway designations for the Hawk Mountain Region are well rounded and include ecologic, recreational and historic resources. The key primary ecologic feature within the Hawk Mountain Region's portion of the Greenway network is the Kittatinny Ridge. The Ridge has been designated as one of the State's "Mega Greenways" because of its ecologic value and because within it is a portion of the Appalachian Trail.

The matrix below shows the Hawk Mountain Region's identified Greenway Network features. The matrix also lists usage opportunities, implementation priorities, and potential partners.

3.2 Hawk Mountain Region

Hawk Mountain Region

Feature	Opportunity	Priority Status - logistics	Partners	Anticipated Revenue Source
Fleetwood Borough	Regional Recreational Trail	Mid Term - The Borough should actively pursue trail connections to the existing Muhlenburg Trail.	Municipalities	Municipal, DCNR
Fleetwood Borough	Recreational based economic development	Long term - Based on connection with the Muhlenburg Trail, Fleetwood Borough could establish regional trail based businesses.	Municipalities	Municipal, DCNR
Hamburg Borough	Tourism based Economic Development	Short term - Relating to recent recreation/economic developments that make the region a tourist destination and the borough's proximity to the inter aggressive marketing campaign efforts should continue. A combined emphasis should be placed on promoting the traveler/tourist oriented commerce as well as the small town and historic amenities that are also established within the borough.	Municipality, Berks Tourist Bureau	Municipal, DCNR
Hamburg Borough	Kaercher Creek Park	Short term - Develop a park master plan outlining any future expansions as well as any major needs with regards to the existing dam and facilities	Berks County	Municipal, DCNR
Hamburg Borough	Kaercher Creek Park	Mid Term - Begin process of acquiring Kaercher Creek ownership from the State of Pennsylvania by conducting any needed studies.	Berks County	Municipal, DCNR
Hamburg Borough	Kernsville Dam	Short term - Berks County should co-sign with Blue Mountain Wildlife to lease Kernsville Dam area from BAMR.	Berks County	Municipal, DCNR, County
Hamburg Borough	Kernsville Dam	Ongoing - efforts should continue to improve the Kernsville Dam area ecologically	Blue Mountain Wildlife, Municipalities	Municipal, DCNR

Feature	Opportunity	Priority Status – Next Steps	Partners	Anticipated Revenue Source
Hamburg Borough	Recreational Trail	Short term and Ongoing - Actively participate with the Schuylkill River Trail alignment location process. Prepare for and establish Borough connectivity to said trail.	Municipalities, SRHA	Municipal, DCNR, William Penn
Hamburg Borough	Reading Railroad Museum	Short term and Ongoing - Efforts to establish and sustain the Reading Railroad Museum should be fully supported. Additionally, local municipalities should consider community events based on the Railroad/Museum to offer support, bolster use and to promote the region's history/heritage. The museum has extremely high potential to serve as a major tourist attraction.	Municipalities, local historical society, Berks County Historical Society, Berks County Museum Board, Berks County Visitors Bureau	Municipal, DCNR
Hawk Mountain	Hawk Mountain Sanctuary/Important Bird Area (IBA)	Continued - support the Hawk Mountain Sanctuary's continued sustainability by helping promote this attraction especially during the hawk migration and fall foliage seasons.	Albany and Windsor, Berks County Visitors Bureau	Municipal, DCNR
		Efforts to buffer this important bird migratory area by land and easement purchase should continue to preserve its longterm viability.	Municipalities	Municipal, DCNR
Hex Highway	Scenic Driving Tour - Create a self guided brochure allowing participants to drive at their own pace while learning about and appreciating historic, cultural and natural resources.	Short term - A low cost, low impact initial project for the corridor aimed at raising historic, cultural and natural resource awareness	Partnering municipalities, Berks Historic Council, Museum Council, Berks Visitors Beureau	Municipal, DCNR
Hex Highway	Establish Bicycle Route - Based on the same rationale of the driving tour, utilize the road's moderate grades to design and implement a bike lane.	Mid term - Municipal support is essential as additional portion of road burm would be needed for a bike lane (implemented during road repaving projects to alleviate cost). Signage and line painting would also be required for safety.	Partnering municipalities, Berks Bike Club, Reading Area Transportation Authority, Berks Visitors Beureau	Municipal, DCNR

3.2 Hawk Mountain Region

Feature	Opportunity	Priority Status – Next Steps	Partners	Anticipated Revenue Source
Kaercher Creek Park	Preserve Long Term viability	Mid-Term - re-negotiate lease agreement with the State or buy the park outright	Berks County	Municipal, DCNR
Kaercher Creek Park	Maintain Facilities	Short term and Ongoing - Make needed repairs to the dam and facilities features. Update signage to be consistent with current standardized design.	Berks County	Municipal, DCNR
Kempton Borough	Recreational Trail	Long Term - Borough residents and municipal officials should seek a Maiden Creek Trail connection through the region, connecting to the borough, and north toward Leaser Lake in Lehigh County.	Municipalities	Municipal, DCNR
Kernsville Dam	Preserve Ecologic Value of Area	Short term and Ongoing - Efforts should be made to buffer and preserve the natural value of the aquatic life above the dam as well as the surrounding woodland.	Municipalities, Blue Mountain Wildlife, Inc.	Municipal, DCNR
Kittatinny Ridge Greenway	Protect Kittatinny Ridge Viewshed	Mid Term - incorporate language within zoning and subdivision/land development ordinances that prevent scarring developments on the ridge.	Municipalities	Municipal, DCNR
Kittatinny Ridge Greenway	Protect Kittatinny Ridge Ecology/Important Bird Area (IBA)	Short term and Ongoing - Protect the Ridge's ecologic system especially with regards to preserving the migratory bird environment.	Municipalities, EACs, Berks Conservancy, Appalachian Mountain Club	Municipal, DCNR
Kittatinny Ridge Greenway	Appalachian Trail Protection and Support	Ongoing - support the longterm viability of the Appalachian Trail by helping maintain trail/road crossings and safety of trailheads. The Appalachian Trail is an under utilized source of tourism.	Municipalities, Appalachian Mountain Club	Municipal, DCNR

Feature	Opportunity	Priority Status – Next Steps	Partners	Anticipated Revenue Source
Kutztown Hub	Continued revitalization efforts	Midterm - Building upon the Borough's Main Street program, continued efforts should be considered including the Elm Street Program. Aggressive marketing based on the Borough's heritage and preserved architecture must be continued. Historic properties which have undergone conversions that are not consistent with their originally intended use should be targeted for preservation and reclamation.	Kutztown Borough	Municipal, DCED
Kutztown Hub	Maxatawny Historic Preservation/District	Short term and Continued - The region's heritage, character and charm are reliant on effective historic preservation. Based on historic survey findings, historic district designations should be considered. Maxatawny Township should consider establishing a historic district for appropriate portions of Kutztown University's campus as well as the Hottenstein Mansion area. Additionally, future development should match the character and feel of the region.	Municipalities, local historical society, Berks County Historical Society, Berks County Museum Board	Municipal, DCED
Lake Ontelaunee	Ecologic Resources	Lake Ontelaunee's abundant and thriving aquatic and water fowl environments should be protected. This can be achieved by requiring more stringent water quality Best Management Practices throughout the surrounding region.	Municipalities	Municipal, DCNR
Lake Ontelaunee	Bird migration area	Short term and Continued - During their journey, flocks of migrating birds often pass through Lake Ontelaunee undoubtedly on there way to or from Hawk Mountain. Efforts should be made to preserve areas that accommodate differing species.	Municipalities, PA Game Commission	Municipal, DCNR

3.2 Hawk Mountain Region

Feature	Opportunity	Priority Status – Next Steps	Partners	Anticipated Revenue Source
Lenhartsville Borough	Tourism based Economic Development	Short term and Ongoing - The region has become a tourist destination due to its heritage, wildlife and attractions. The combination of the borough's historic nature and proximity these features make it a logical locale for traveler/tourist oriented commerce. These uses could include but are not limited to cafes, small shops as well as bed'n'breakfasts. Any development or property rehabilitation must match the historic character of the borough.	Municipality, Berks Chamber of Commerce, Berks Visitors Bureau	Municipal, DCNR
Lenhartsville Borough	Recreational Trail	Mid term - There is an opportunity to establish a recreational trail within efforts for preserving the Maiden Creek's riparian corridor. Lenhartsville would be a destination along the scenic corridor and the village's citizens would have to play a role in championing such a project.	Municipalities	Municipal, DCNR
Maiden Creek Greenway	Recreational Trail	Mid term - There is an opportunity to establish a recreational trail within efforts for preserving the Maiden Creek's riparian corridor. In addition to the health benefits for the region's citizens, the trail could also be used as an educational tool highlighting the benefits of Best Management Practices for protection of creek's riparian buffer and water quality.	local municipalities, DCNR, Berks County Planning Commission	Municipal, DCNR
Maiden Creek Greenway North	Recreational Trail	Long term - There is an opportunity to extend the potential Maiden Creek Trail north through Kempton and into Lehigh County to the Leaser Lake area.	local municipalities, DCNR, Berks County, Lehigh County	Municipal, DCNR
Maxatawny Greenway	Recreational Trail	Mid term - There is an opportunity to establish a recreational trail connectors between boroughs by utilizing established Joint Planning cooperatives within this portion of the Hawk Mountain Region. The trail would provide health benefits for the region's citizens.	local municipalities, DCNR, Berks County Planning Commission	Municipal, DCNR

Feature	Opportunity	Priority Status – Next Steps	Partners	Anticipated Revenue Source
Northkill Headwaters Hub*	Ecologic Resources* (*portions of this hub are within the Hawk Mountain Region so additional inter-municipal cooperation will be required)	Short term and Continued - continually update comprehensive plans, zoning and subdivision/land development ordinances in an effort to guide growth to appropriate locations. Special care should be given to habitat as two Pennsylvania Natural Diversity Inventory (PNDI) sites are within this area.	Municipality, Berks County Planning Commission, PaDEP	Municipal, DCNR
Schuylkill River Greenway	Recreational Trail	Short term - Trail efforts by the Schuylkill River Greenway Association have begun. Support and aid should be provided by the by the municipalities. The trail will be a valuable recreational opportunity as well as a potential economic stimulus for the region	Berks County, Schuylkill River Greenway Assoc., Municipalities	Municipal, DCNR
Schuylkill River Greenway	Install uniform wayfinding and interpretive signage for region-wide land/water trails, parks, heritage resources using the Schuylkill River Heritage Area sign design guidelines	Short term and Ongoing - a)install signs (Trail Blades, Trailhead, Directional Highway) on Schuylkill River Trail	Municipalities, SRGA, Berks County	William Penn Foundation Grant
Schuylkill River Greenway		Short term and Ongoing - b)install uniform signs in parks along the SRT	Municipalities, SRGA, Berks County	Municipal, DCNR
Schuylkill River Greenway	Water Trail	Short term - The water trail should be promoted. Additional boat access to the trail must be provided.	Municipalities, SRGA, Berks County	Municipal, DCNR
Schuylkill River Greenway	Recreational Trail	Short term and Ongoing - Development of the Schuylkill trail should follow the phases outlined within the SRGA's Reading to Hamburg feasibility study. Ongoing efforts should be made to acquire land and easements from Reading to Hamburg.	Municipalities, SRGA, Berks County	Municipal, DCNR

3.2 Hawk Mountain Region

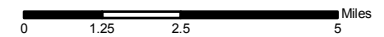
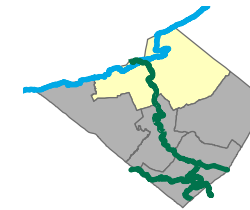
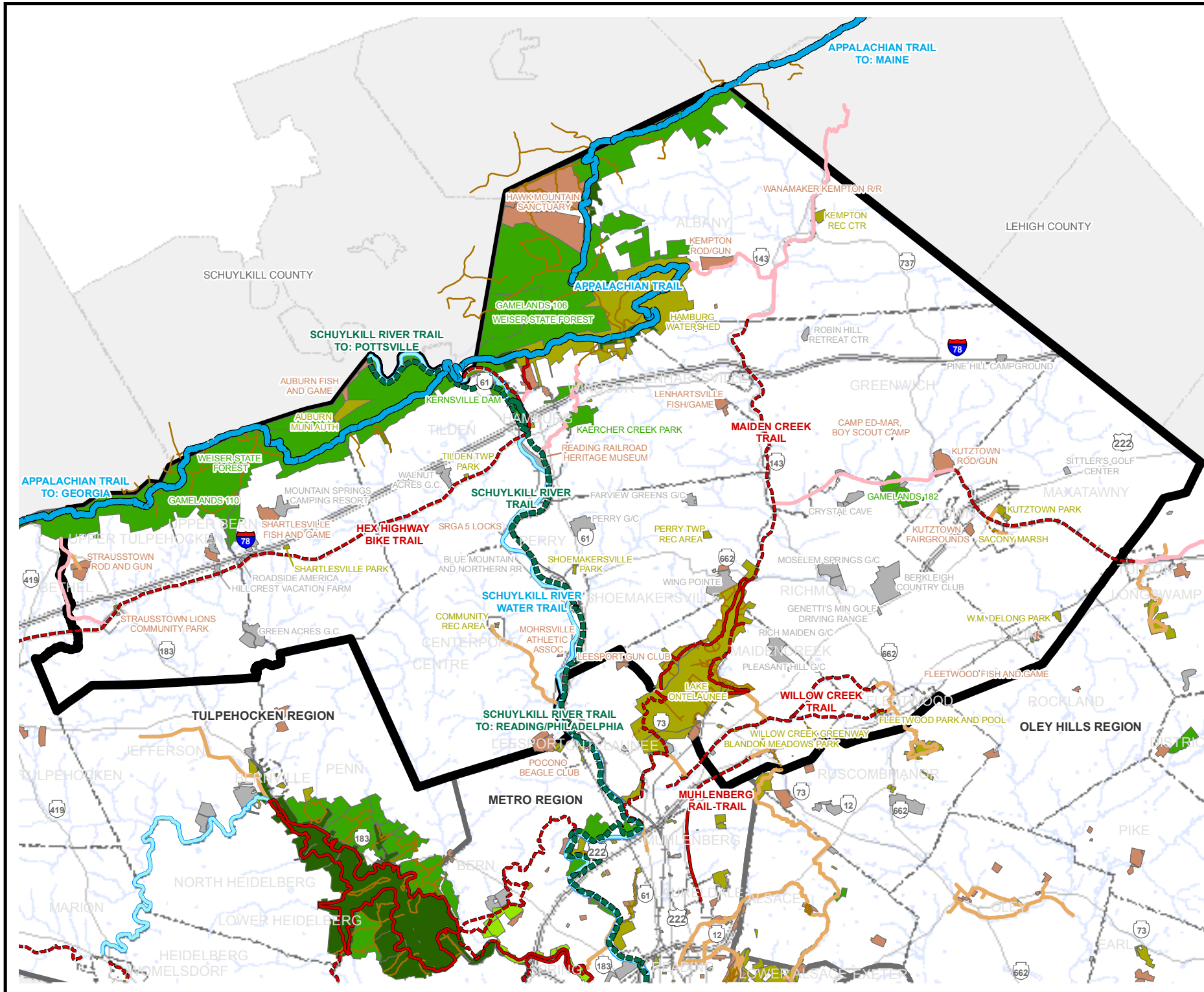
Feature	Opportunity	Priority Status – Next Steps	Partners	Anticipated Revenue Source
Shartlesville Borough	Appalachian Trail connector	Short term - Identify a corridor and establish a trail connector between the village and the Appalachian Trail. This is the first step at making the town a designated stop for trail users as well as a potential starting point as well. Trail related tourist businesses could follow.	Municipality, Berks Chamber of Commerce, Berks Visitors Beureau	Municipal, DCNR
Shoemakersville Borough	Recreational Trail	Actively participate with the Schuylkill River Trail alignment location process. Prepare for and establish Borough connectivity to said trail.	SRHA, Municipalities, Berks County	Municipal, DCNR
Shoemakersville Borough	Recreationally based Economic Development	Long term - Shoemakersville Borough could establish Schuylkill River Trail based businesses.	Municipalities	Municipal, DCNR
Strausstown Borough	Establish Trail Head Commerce - based on Hex Highway road and bicycle tour programs	Long Term - Parking areas, community festival grounds and tourist related businesses would be appropriate. Marketing could be tied to Appalachian Trail Connector initiative and spearheaded by a potential regional Chamber of Commerce.	Municipality, Berks Chamber of Commerce, Berks Visitors Beureau	Municipal, DCNR
Virginville Borough	Recreational Trail	Mid term - There is an opportunity to establish a recreational trail within efforts for preserving the Maiden Creek's riparian corridor. Virginville would be a destination along the scenic corridor and the village's citizens would have to play a role in championing such a project.	Municipalities	Municipal
Virginville Borough	Recreationally based Economic Development	Long term - Once established, a Maiden Creek trail should be regionally marketed to establish trail related economic development.	Municipality, Berks Chamber of Commerce, Berks Visitors Beureau	Municipal

Feature	Opportunity	Priority Status – Next Steps	Partners	Anticipated Revenue Source
Regional Ecologic	Implement Stream and tributary corridor protection measures	Short term and continued - Streams and their tributaries of the Tulpehocken Region must be protected. Steams and their tributaries of any size, are severely affected by disturbance within their riparian buffer zone. Example activities that should not occur within the zone include but are not limited to mowing, livestock grazing/Xing. Activities like stream damming, excavation and re-routing/re-structuring must be fully permitted prior to start of the activity.	Tulpehocken Region citizens, local municipalities, Berks County, PaDEP	Municipal, DCNR
Regional Ecologic	Buffer protection for Kittattinny Ridge and AT	Short term and continued - The ridge must be protected from development and fragmentation by effective land use regulations as well as a continued effort to aquire and ease buffer lands.	Municipalities, Berks County	Municipal
Regional Ecologic	Enact land use regulations pertaining to natural resource protection	Short term and continued - All municipalities should periodically review their zoning to be sure that regulations support preservation efforts. Implementation of the Berks Count CZIP program should be considered in areas of high ecologic value	Municipalities, Berks County	Municipal
Regional Ecologic	Viewshed protection	Short term - Incorporate language within zoning and subdivision and land development ordinances that effectively prevents scarring of the ridge by strictly enforcing development regulations on steep slopes and regulating forestry practices.	Municipalities, Berks County	Municipal
Regional Ecologic	Natural Feature Protections	Mid Term - Within enacted CZIP areas, municipalities can utilize the Municipal Land Protection Program to purchase easements land.	Municipalities, Berks County	Municipal, County
Regional Heritage	Historic Surveys should be completed for all Municipalities within the region	An inventory must be conducted as a precursor to their preservation. The Region's and County's history as well as character and charm are reliant an these efforts.	Municipalities, Berks County, Local Historical Societies, Berks Museum Council	Municipal, County

3.2 Hawk Mountain Region

Feature	Opportunity	Priority Status – Next Steps	Partners	Anticipated Revenue Source
Regional Heritage	Strengthen municipal planning efforts to encourage continued integrity of historic resources	a)develop regulations/policies that protect heritage resources; develop land use regulations that require new construction to compliment surroundings (develop design guidelines), encourage adaptive reuse, make easier to rehabilitate, discourage demolition	Municipalities, Berks County	Municipal, DCED
		b)develop/expand façade improvement programs to enhance important streetscapes	Municipalities	Municipal, DCED
		c)promote revitalization efforts in commercial core and surrounding residential neighborhoods of historic downtowns by adopting/maintaining Main Street and Elm Street Programs	Municipalities	Municipal, DCED
		d)create Historic Districts/HARB(Historic Architectural Review Board) where there is integrity and concentration of significant resources	Municipalities	Municipal
Regional Recreation	Recreational Opportunities	A continuous effort should be made to evaluate the recreational needs of Berks County's Citizens. Municipalities should strive to provide adequate recreational resources.	Municipalities, Berks County Planning Commission	Municipal
Regional Recreation	Joint Recreational Cooperatives	Municipalities should consider cooperative buying arrangements to potentially lower cost. Joint recreational boards as well as regional parks that are jointly operated, maintained and financed should also be considered.	Municipalities, Berks Center for Community Leadership, Berks County Planning Commission	Municipal

Recreation Resources: Hawk Mountain Region



Trail Network

Hierarchy

- Interstate
- Intercounty
- Regional
- Local
- Proposed Intercounty
- - - Proposed Regional
- - - Proposed Local
- Water Trail
- Potential Regional Connection
- Potential Local Connection

Recreation Facilities

Ownership Categories

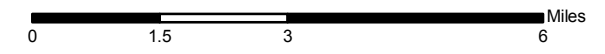
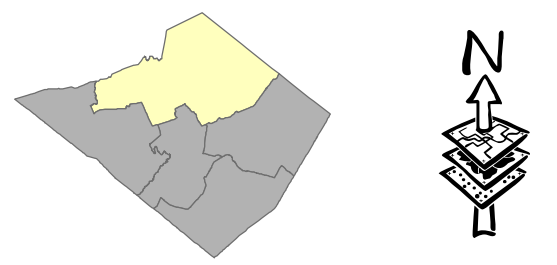
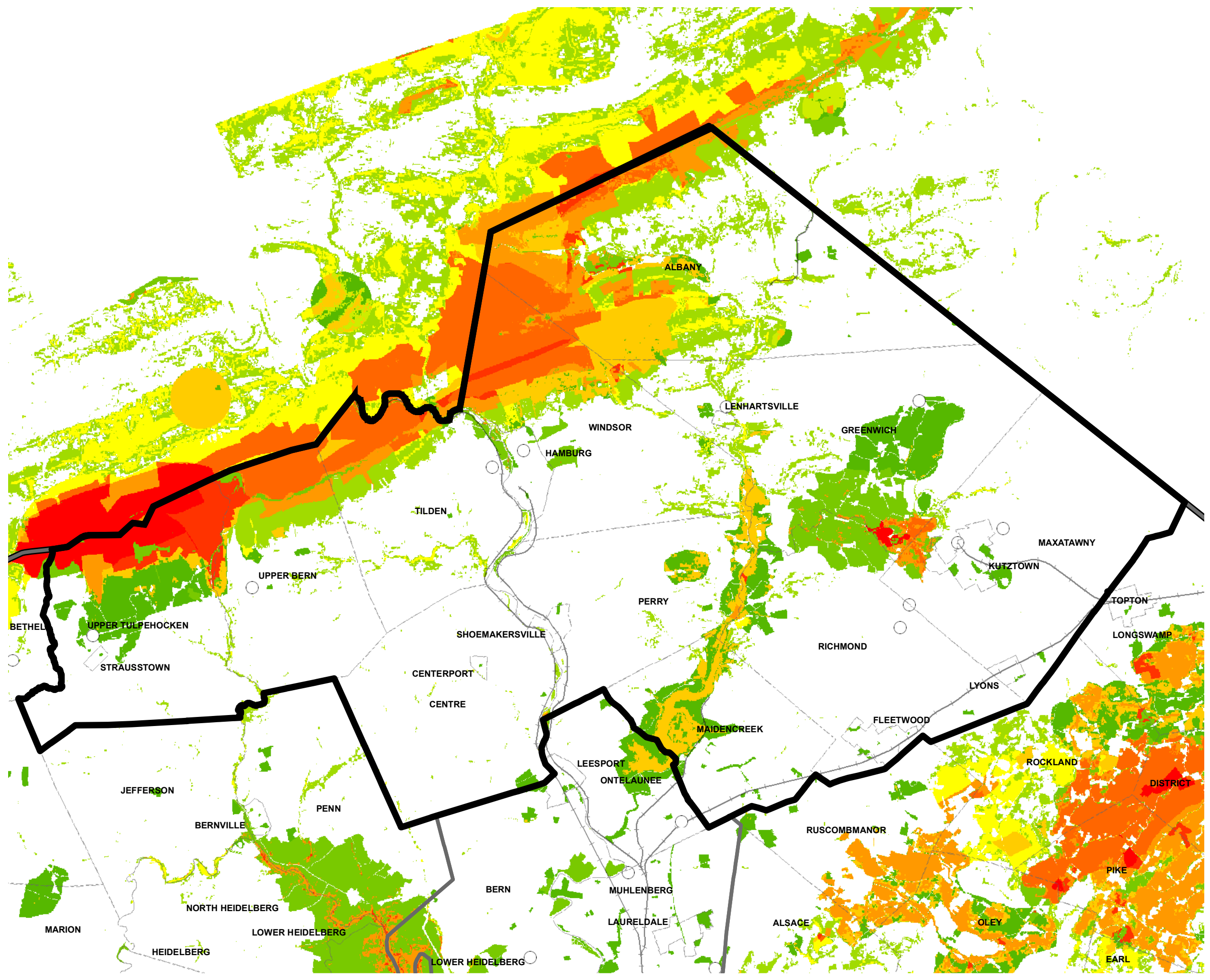
- Federal
- State
- County
- Municipal
- Non-Profit
- Private

- Regions
- Limited Access Highway
- Municipal Bounds
- Railroad
- Streams

Prepared by the Berks County Planning Commission
with The Berks County Parks Department
The Berks County Conservancy
PA DCNR
Steering Committees and Numerous Stakeholders

Thanks to All

Ecologic Resources: Hawk Mountain Region



Ecologic Modeling

	1 - High Value
	2
	3
	4
	5
	6
	7
	8
	9
	10 - Highest Value

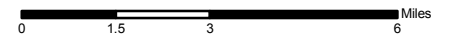
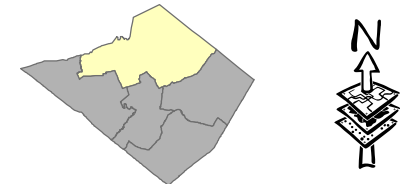
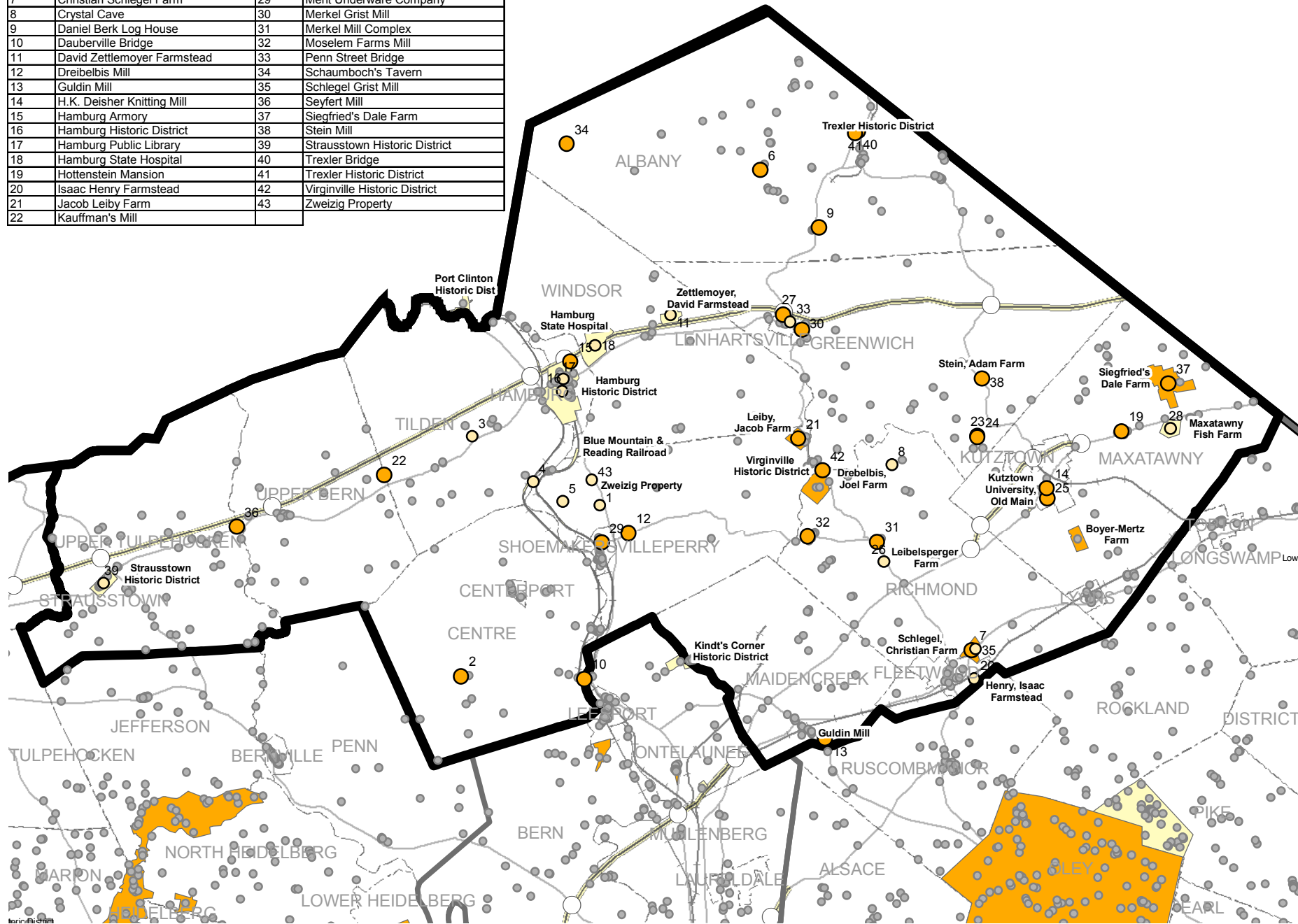
	Major Interchange
	Limited Access Highway
	Municipal Boundaries
	Major Highways
	Railroad
	Streams
	Regions

Prepared by the Berks County Planning Commission
with The Berks County Parks Department
The Natural Lands Trust
The Berks County Conservancy
PA DCNR
Steering Committees and Numerous Stakeholders

Thanks to All

Historic Resources: Hawk Mountain Region

Map ID	Historic Feature	Map ID	Historic Feature
1	Amela Levan Property	23	Kutz Mill
2	Bellmans Union Church	24	Kutz Mill Bridge
3	Benjamin Sontag Farmstead	25	Kutztown 1892 Public School Buil
4	Berne Station Bridge	26	Leibelsperger Farm
5	Blue Mountain & Reading Railroad	27	Lenhart Farm
6	Brobst Grist Mill	28	Maxatawny Fish Farm
7	Christian Schlegel Farm	29	Merit Underware Company
8	Crystal Cave	30	Merkel Grist Mill
9	Daniel Berk Log House	31	Merkel Mill Complex
10	Dauberville Bridge	32	Moselem Farms Mill
11	David Zettlemoyer Farmstead	33	Penn Street Bridge
12	Dreibelbis Mill	34	Schaumboch's Tavern
13	Guldin Mill	35	Schlegel Grist Mill
14	H.K. Deisher Knitting Mill	36	Seyfert Mill
15	Hamburg Armory	37	Siegfried's Dale Farm
16	Hamburg Historic District	38	Stein Mill
17	Hamburg Public Library	39	Strausstown Historic District
18	Hamburg State Hospital	40	Trexler Bridge
19	Hottenstein Mansion	41	Trexler Historic District
20	Isaac Henry Farmstead	42	Virginville Historic District
21	Jacob Leiby Farm	43	Zweizig Property
22	Kauffman's Mill		



Legend

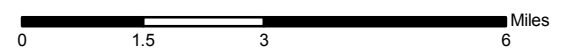
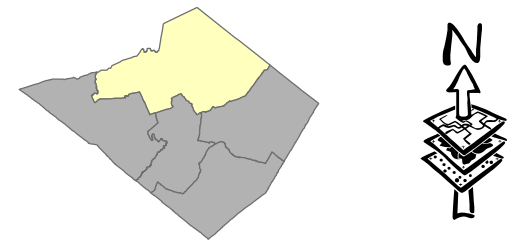
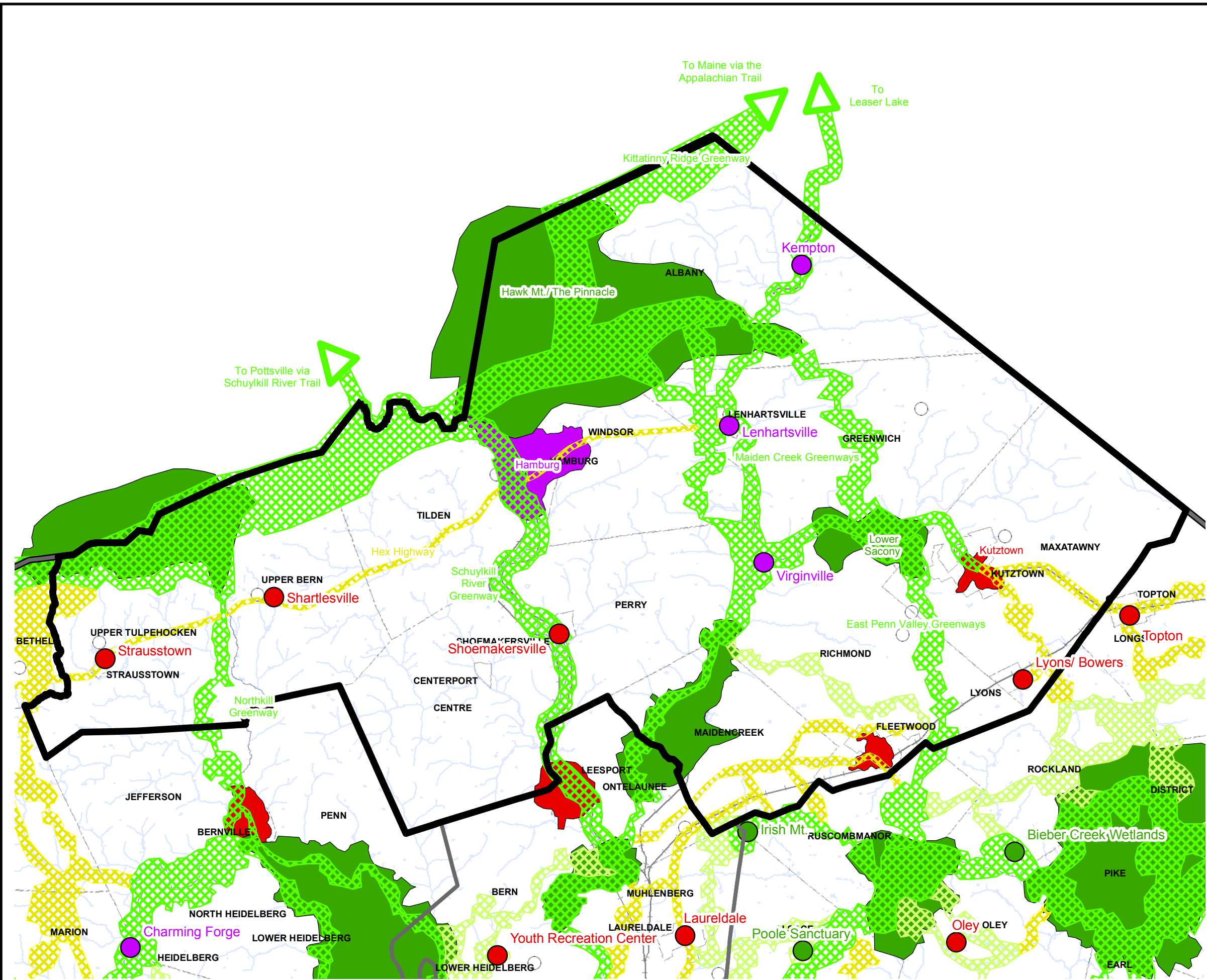
- Historic Sites**
 - National Register Listed (Orange circle)
 - National Register Eligible (Yellow circle)
 - Other Sites* (Grey circle)
- Historic Districts**
 - National Register Listed (Orange shaded area)
 - National Register Eligible (Yellow shaded area)
- Major Interchange (White circle with black outline)
- Limited Access Highway (Thick grey line)
- Major Highways (Thin grey line)
- Municipal Bounds (Dashed line)
- Streams (Blue line)
- Railroad (Black line with cross-ticks)
- Regions (Thick black outline)

* includes sites identified within surveys conducted by one or more of the following groups: Pennsylvania Museum and Historic Council, Berks County Conservancy, George Meiser and local historical societies.

Prepared by the Berks County Planning Commission
with The Berks County Parks Department
The Berks County Conservancy
PA DCNR
Steering Committees and Numerous Stakeholders

Thanks to All

Greenway Network: Hawk Mountain Region



Legend

1	Major Interchange
2	Limited Access Highway
3	Major Highways
Ecological	Railroad
Destination/ Ecological	Streams
Destination	Regions
Ecological	Municipal Boundaries
Destination/ Ecological	
Destination	

Prepared by the Berks County Planning Commission
with The Berks County Parks Department
The Natural Lands Trust
The Berks County Conservancy
PA DCNR
Steering Committees and Numerous Stakeholders

Thanks to All